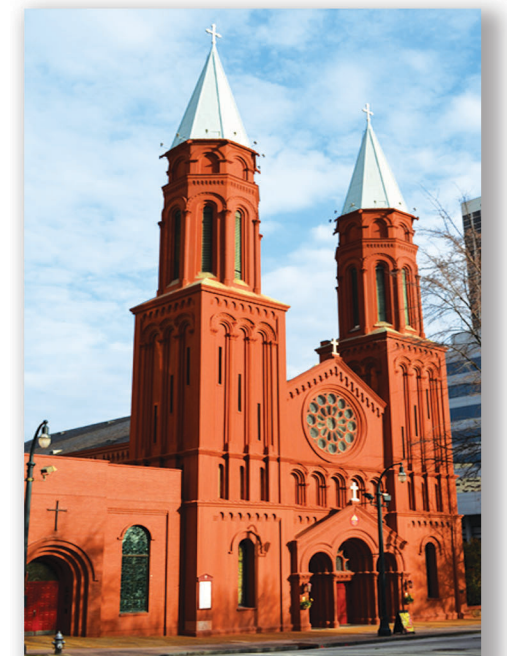


## Basilica of the Sacred Heart of Jesus, Atlanta, GA



### Lighting Concept

December, 2021  
June, 2022  
(01/05) January, 2023  
(01/10) January, 2023  
(06/01) June, 2023  
(04/25) April, 2024

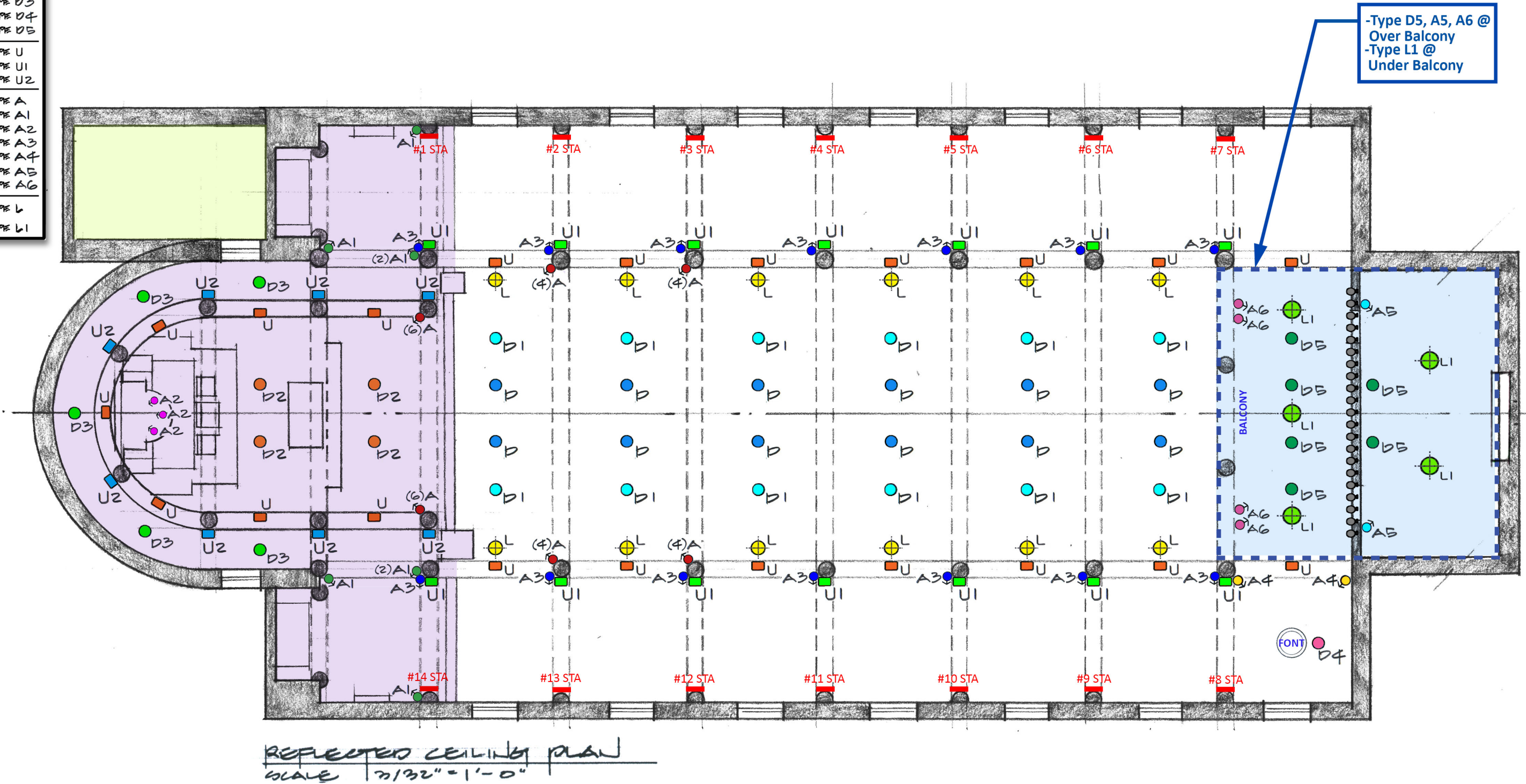
RAMBUSCH<sub>1898</sub>

160 Cornelison Avenue | Jersey City, NJ 07304 | tel: 201.333.2525 | fax: 201.433.3355 | [www.rambusch.com](http://www.rambusch.com)

# LIGHTING LAYOUT

**[Fixture Type Legend]**

Downlight	● TYPE D
	● TYPE D1
	● TYPE D2
	● TYPE D3
	● TYPE D4
	● TYPE D5
Uplight	■ TYPE U
	■ TYPE U1
	■ TYPE U2
Accent light	● TYPE A
	● TYPE A1
	● TYPE A2
	● TYPE A3
	● TYPE A4
	● TYPE A5
	● TYPE A6
Lantern	● TYPE L
	● TYPE L1

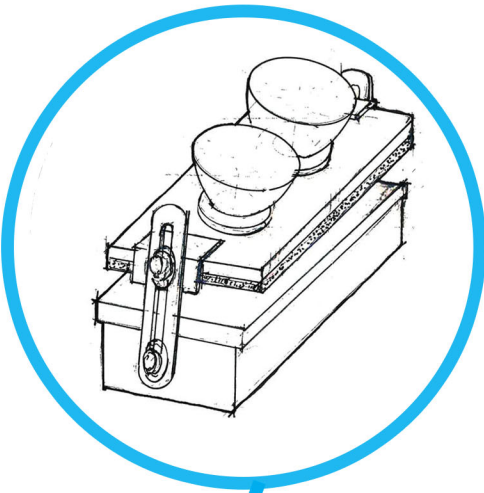


# LIGHTING FIXTURE IMAGES

**[Fixture Type Legend]**

Downlight	● TYPE D
	● TYPE D1
	● TYPE D2
	● TYPE D3
	● TYPE D4
	● TYPE D5
Uplight	■ TYPE U
	■ TYPE U1
	■ TYPE U2
Accent light	● TYPE A
	● TYPE A1
	● TYPE A2
	● TYPE A3
	● TYPE A4
	● TYPE A5
	● TYPE A6
Lantern	● TYPE L
	● TYPE L1

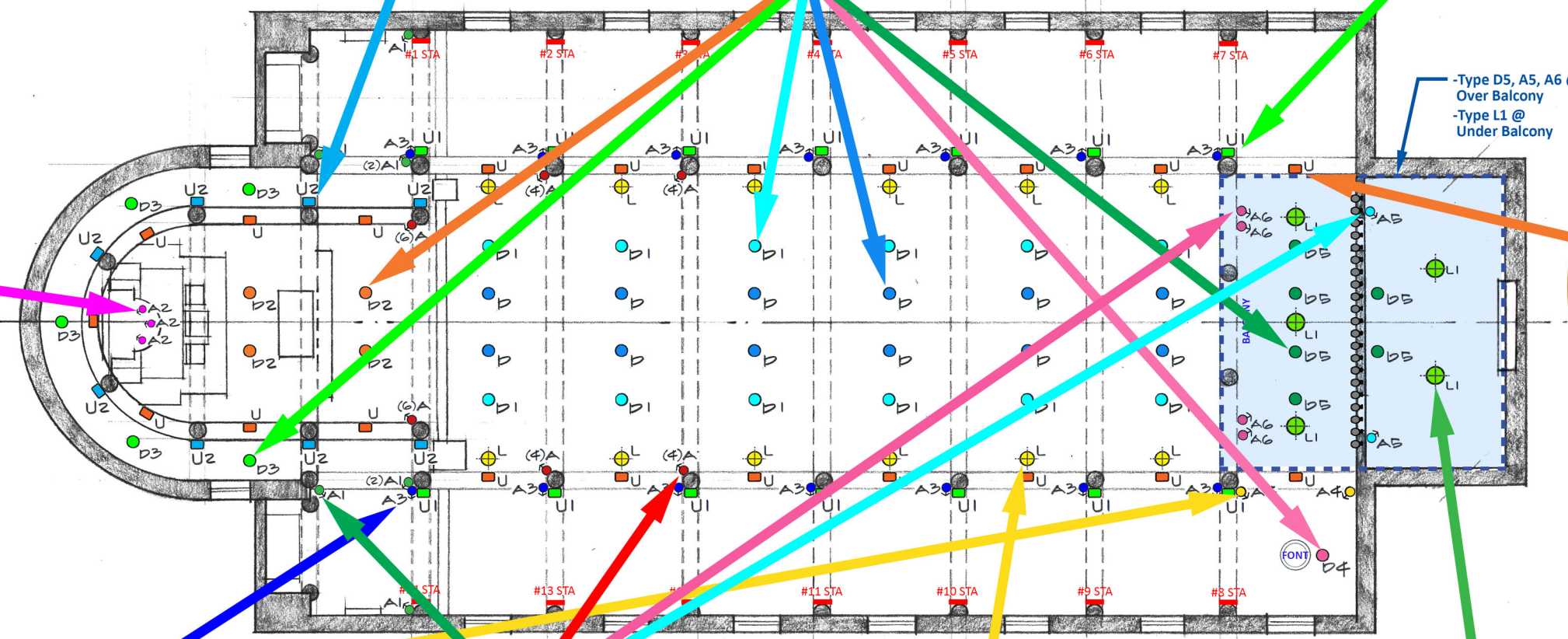
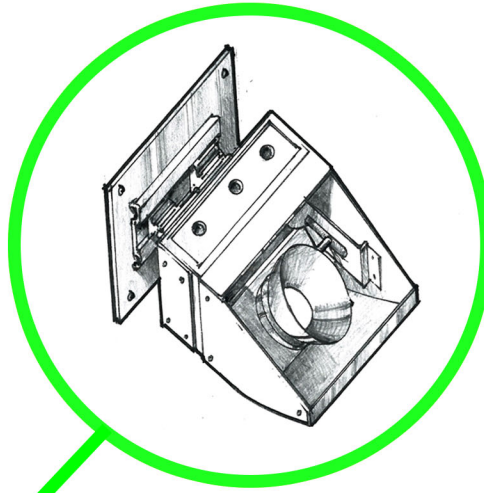
**Type U2**  
Surface mounted  
uplight  
4000 lumens



**Type D,D1,D2,D3, D4, D5**  
Recessed single  
adjustable downlight  
5000 lumens



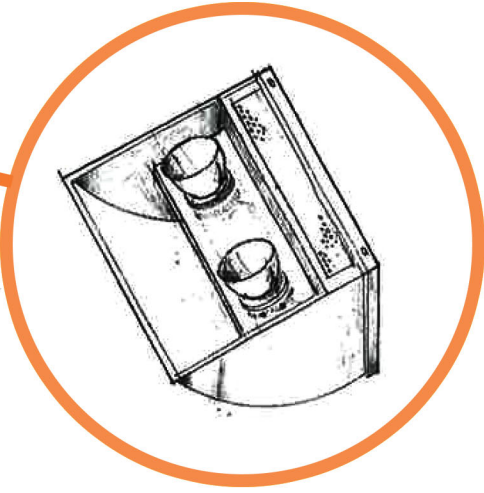
**Type U1**  
Surface mounted  
uplight  
2000 lumens



**Type A2**  
Recessed accent light  
2000 lumens



**Type U**  
Surface mounted  
Flite uplight  
4000 lumens



**Type A3, A4**  
Surface mounted  
accent light  
1300 lumens



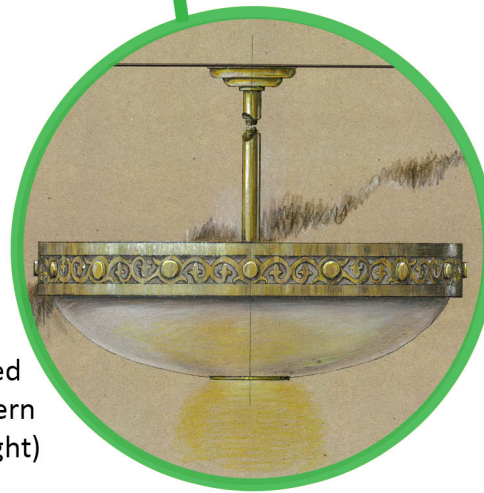
**Type A,A1,A5,A6**  
Surface mounted  
accent light  
5000 lumens



**Type L**  
Existing  
Surface mounted  
decorative lantern  
(glow + downlight)



**Type L1**  
New  
Surface mounted  
decorative lantern  
(glow + downlight)



# CONTROL INTENT DIAGRAM : downlight control circuits

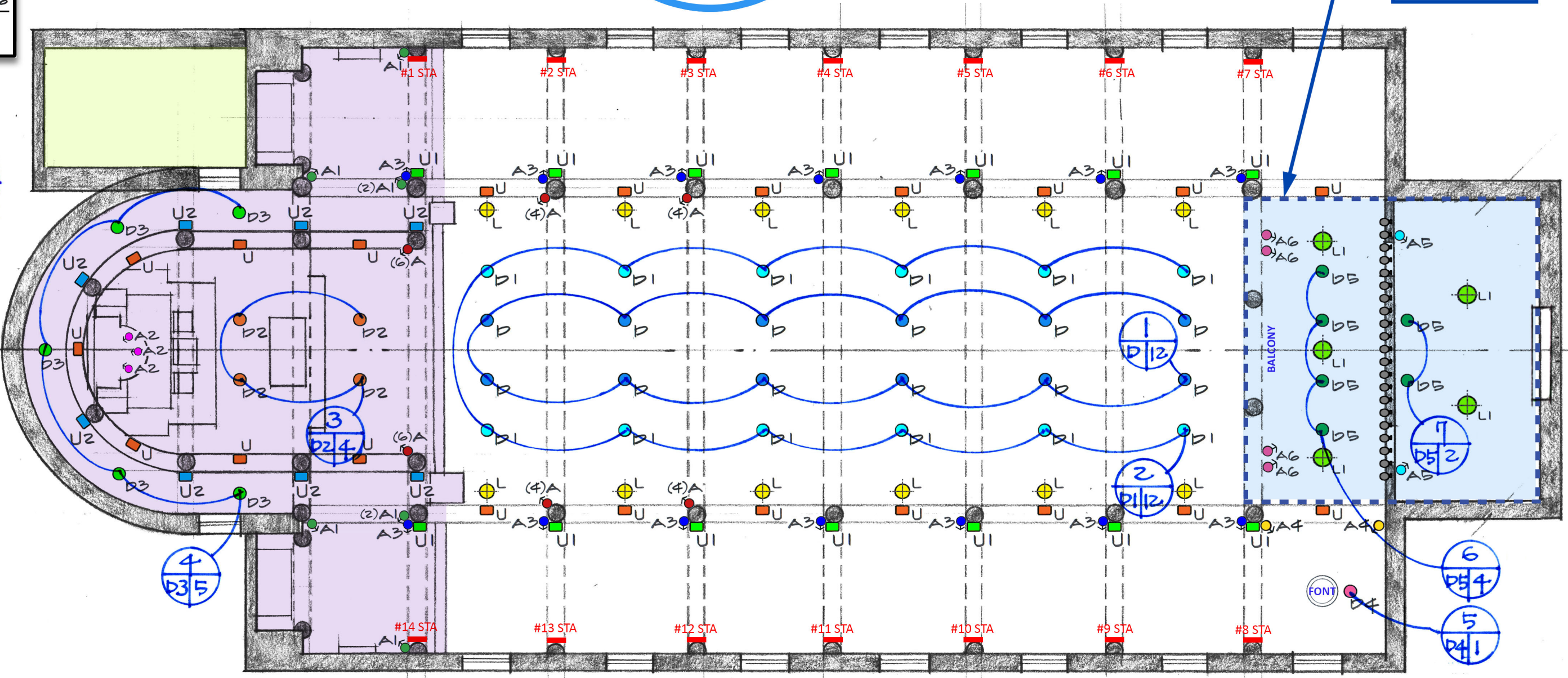
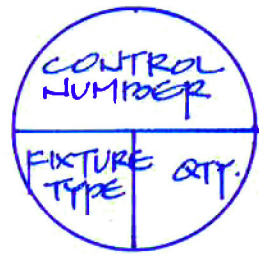
**[Fixture Type Legend]**

Downlight	TYPE D
	TYPE D1
	TYPE D2
	TYPE D3
	TYPE D4
	TYPE D5
Uplight	TYPE U
	TYPE U1
	TYPE U2
Accent light	TYPE A
	TYPE A1
	TYPE A2
	TYPE A3
	TYPE A4
	TYPE A5
	TYPE A6
Lantern	TYPE L
	TYPE L1



Type D, D1, D2, D3, D4, D5  
Recessed single adjustable downlight  
5000 lumens

-Type D5, A5, A6 @  
Over Balcony  
-Type L1 @  
Under Balcony



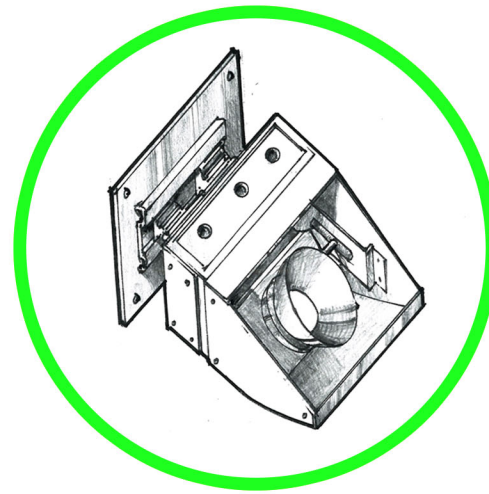
# CONTROL INTENT DIAGRAM : uplight control circuits

**[Fixture Type Legend]**

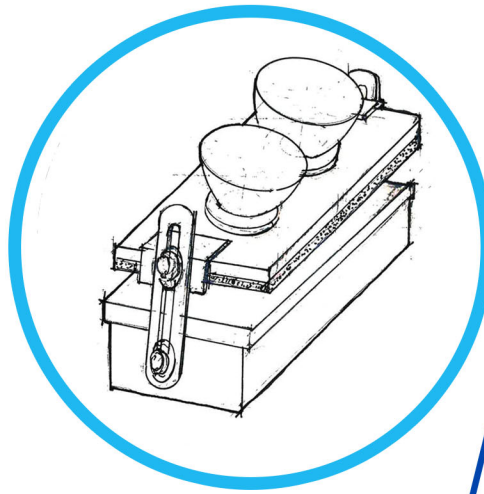
Downlight	TYPE D
	TYPE D1
	TYPE D2
	TYPE D3
	TYPE D4
	TYPE D5
Uplight	TYPE U
	TYPE U1
	TYPE U2
Accent light	TYPE A
	TYPE A1
	TYPE A2
	TYPE A3
	TYPE A4
	TYPE A5
	TYPE A6
Lantern	TYPE L
	TYPE L1



**Type U**  
Surface mounted  
uplight  
4000 lumens

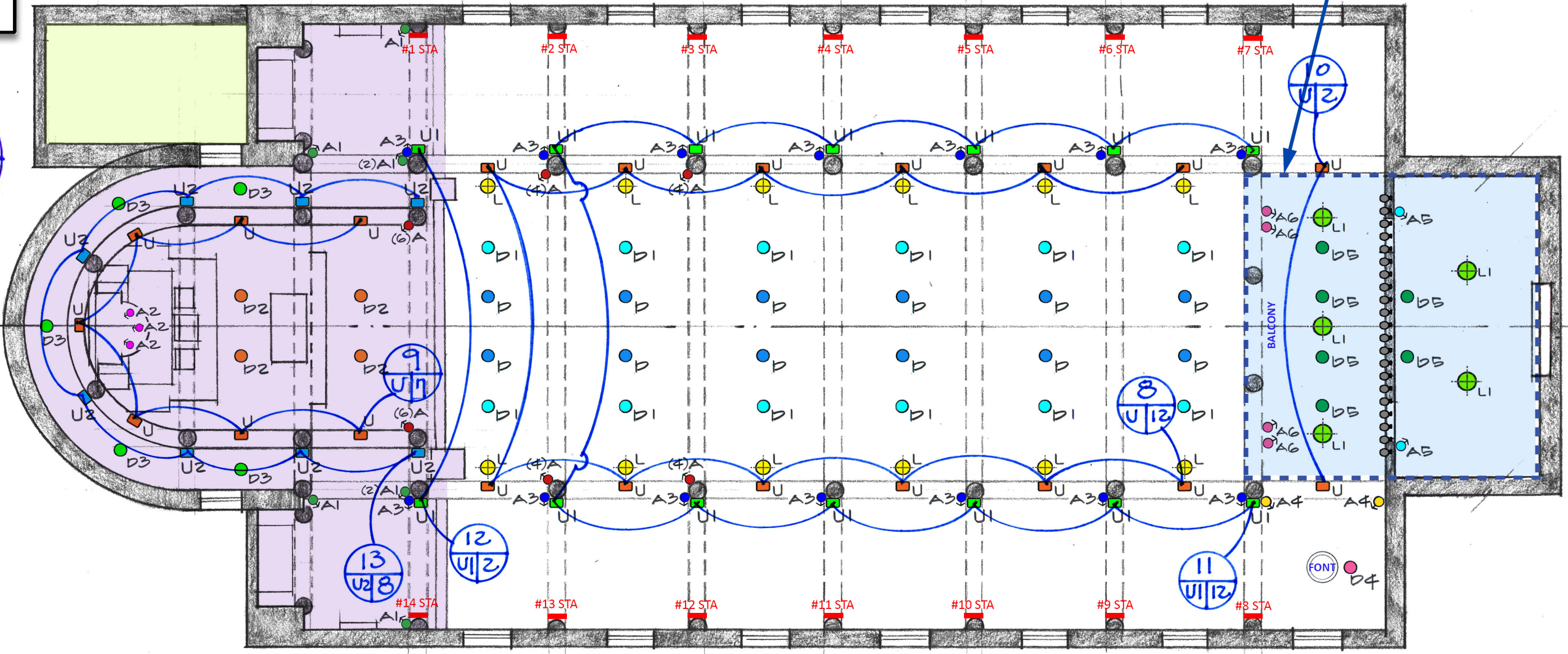
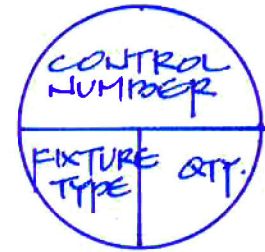


**Type U1**  
Surface mounted  
uplight  
2000 lumens



**Type U2**  
Surface mounted  
uplight  
4000 lumens

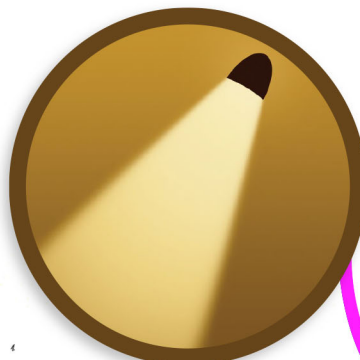
-Type D5, A5, A6 @  
Over Balcony  
-Type L1 @  
Under Balcony



# CONTROL INTENT DIAGRAM : accent light control circuits

**[Fixture Type Legend]**

Downlight	TYPE D
	TYPE D1
	TYPE D2
	TYPE D3
	TYPE D4
	TYPE D5
Uplight	TYPE U
	TYPE U1
	TYPE U2
Accent light	TYPE A
	TYPE A1
	TYPE A2
	TYPE A3
	TYPE A4
	TYPE A5
	TYPE A6
Lantern	TYPE L
	TYPE L1

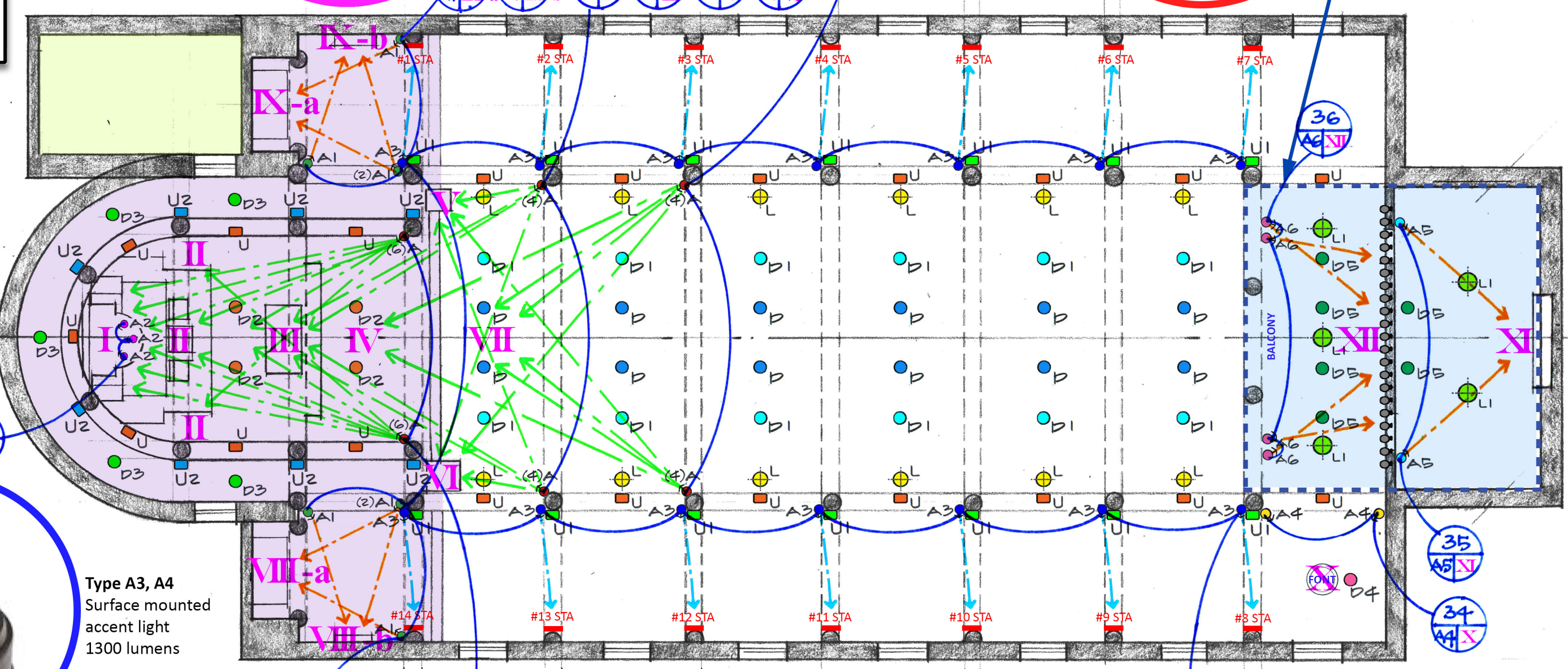
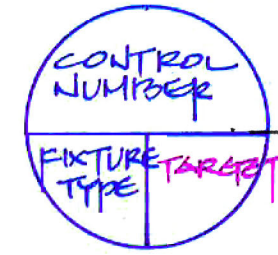
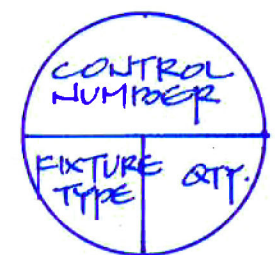


**Type A2**  
Recessed accent light  
2000 lumens



**Type A, A1, A5, A6**  
Surface mounted  
accent light  
5000 lumens

-Type D5, A5, A6 @  
Over Balcony  
-Type L1 @  
Under Balcony



**Type A3, A4**  
Surface mounted  
accent light  
1300 lumens

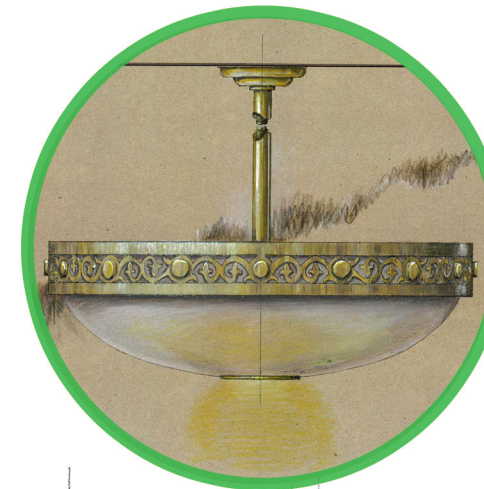
# CONTROL INTENT DIAGRAM : decorative lantern control circuits

**[Fixture Type Legend]**

Downlight	TYPE D
	TYPE D1
	TYPE D2
	TYPE D3
	TYPE D4
	TYPE D5
Uplight	TYPE U
	TYPE U1
	TYPE U2
Accent light	TYPE A
	TYPE A1
	TYPE A2
	TYPE A3
	TYPE A4
	TYPE A5
	TYPE A6
Lantern	TYPE L
	TYPE L1

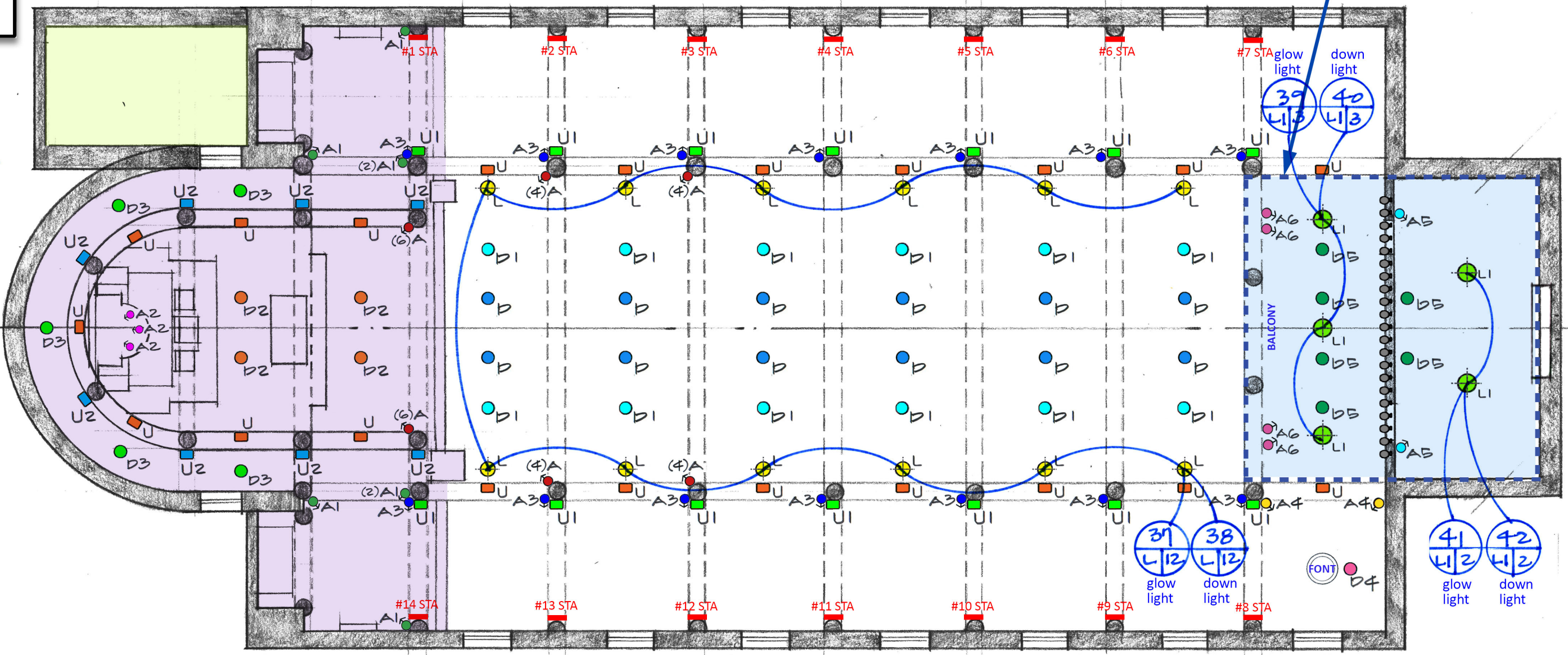
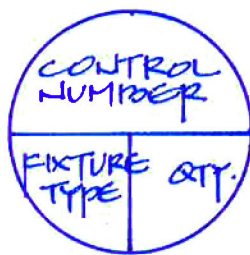


**Type L**  
Existing  
Surface mounted  
decorative lantern  
(glow + downlight)



**Type L1**  
New  
Surface mounted  
decorative lantern  
(glow + downlight)

-Type D5, A5, A6 @  
Over Balcony  
-Type L1 @  
Under Balcony



# DIMMING CONTROL GROUPS AND SUGGESTED SCENE SETTINGS

## Basilica of the Sacred Heart of Jesus, Atlanta, GA Dimming control groups and suggested scene settings (April, 2024)

	Downlight							Uplight						Accent														Lantern																				
channels	1	2	3	4	5	6	7	8	9	10	11	12	13	14	15	16	17	18	19	20	21	22	23	24	25	26	27	28	29	30	31	32	33	34	35	36	37	38	39	40	41	42						
light type	Downlight							Uplight						Accent														Lantern																				
fixture type	D	D1	D2	D3	D4	D5	D5	U	U	U	U1	U1	U2	A	A	A	A	A	A	A	A	A	A	A1	A1	A1	A1	A2	A3	A	A	A	A	A4	A5	A6	glow   down	glow   down	glow   down	glow   down	glow   down	glow   down						
Pre- and Post Liturgy	60	30	30	60	30	30	30	30	30	30	30	30	30	90	90	90	60	60	90	90	90	60	60	30	30	30	30	30	30	60	60	60	60	30	30	30	30	30	30	30	30	30						
Visiting hours	0	0	0	0	0	0	0	0	0	0	0	0	0	0	0	0	0	0	0	0	0	0	0	0	0	0	0	0	0	0	0	0	0	0	0	0	0	0	0	0	0	0	0	0	0			
Daily Mass	0	0	0	0	0	0	0	0	0	0	0	0	0	0	0	0	0	0	0	0	0	0	0	0	0	0	0	0	0	0	0	0	0	0	0	0	0	0	0	0	0	0	0	0	0	0	0	
Sunday Mass	0	0	0	0	0	0	0	0	0	0	0	0	0	0	0	0	0	0	0	0	0	0	0	0	0	0	0	0	0	0	0	0	0	0	0	0	0	0	0	0	0	0	0	0	0	0	0	
Weddings	0	0	0	0	0	0	0	0	0	0	0	0	0	0	0	0	0	0	0	0	0	0	0	0	0	0	0	0	0	0	0	0	0	0	0	0	0	0	0	0	0	0	0	0	0	0	0	
Adoration	0	0	0	0	0	0	0	0	0	0	0	0	0	0	0	0	0	0	0	0	0	0	0	0	0	0	0	0	0	0	0	0	0	0	0	0	0	0	0	0	0	0	0	0	0	0	0	
Extra	0	0	0	0	0	0	0	0	0	0	0	0	0	0	0	0	0	0	0	0	0	0	0	0	0	0	0	0	0	0	0	0	0	0	0	0	0	0	0	0	0	0	0	0	0	0	0	
Extra	0	0	0	0	0	0	0	0	0	0	0	0	0	0	0	0	0	0	0	0	0	0	0	0	0	0	0	0	0	0	0	0	0	0	0	0	0	0	0	0	0	0	0	0	0	0	0	
Extra	0	0	0	0	0	0	0	0	0	0	0	0	0	0	0	0	0	0	0	0	0	0	0	0	0	0	0	0	0	0	0	0	0	0	0	0	0	0	0	0	0	0	0	0	0	0	0	0
watts per fixture	53	53	53	53	53	53	53	30	30	30	15	15	30	42	42	42	42	42	42	42	42	42	42	42	42	42	16	16	42	42	42	42	16	42	42	50	42	50	42	50	42							
quantity per group	12	12	4	5	1	4	2	12	7	2	12	2	8	2	2	2	2	2	2	2	2	2	2	2	2	2	3	14	2	2	2	2	2	2	2	4	12	12	3	3	2	2						
watts per group	636	636	212	265	53	212	106	360	210	60	180	30	240	84	84	84	84	84	84	84	84	84	84	84	84	48	224	84	84	84	84	32	84	168	600	504	150	126	100	84								
location/target	Nave Center	Nave Side	Sanctuary	Apse Ambulatory	Font	Choir	Choir	Nave	Sanctuary Apse	Choir	Side Aisles - Near Sanctuary	Sanctuary Side Aisle	Apse Ambulatory	Reredos / High Altar I	Reredos / High Altar I	Reredos / High Altar I	Presider Chairs II	Presider Chairs II	Altar III	Altar III	Altar III	Cantor Stand V	Ambo VI	South Shrine VIII-a	South Shrine VIII-b	North Shrine IX-a	North Shrine IX-b	Baldacchino	Stations of the Cross	Sanctuary Front IV	Cantor Stand / Ambo V / VI	Top of Nave VII	Top of Nave VII	Font X	Rose Window XI	Pipe Organ XII	Nave	Nave	Under Balcony	Under Balcony	Narthex	Narthex						



# LIGHTING BEAM STUDY @ Sanctuary, Nave, Narthex/Choir loft

**[Fixture Type Legend]**

<b>Downlight</b>	● TYPE D
	● TYPE D1
	● TYPE D2
	● TYPE D3
	● TYPE D4
	● TYPE D5
<b>Uplight</b>	■ TYPE U
	■ TYPE U1
	■ TYPE U2
<b>Accent light</b>	● TYPE A
	● TYPE A1
	● TYPE A2
	● TYPE A3
	● TYPE A4
	● TYPE A5
	● TYPE A6
<b>Lantern</b>	■ TYPE L
	■ TYPE L1



**DOWNLIGHT**  
Recessed adjustable high-output downlights are located in current vault locations to provide a heavy volume of ambient light.



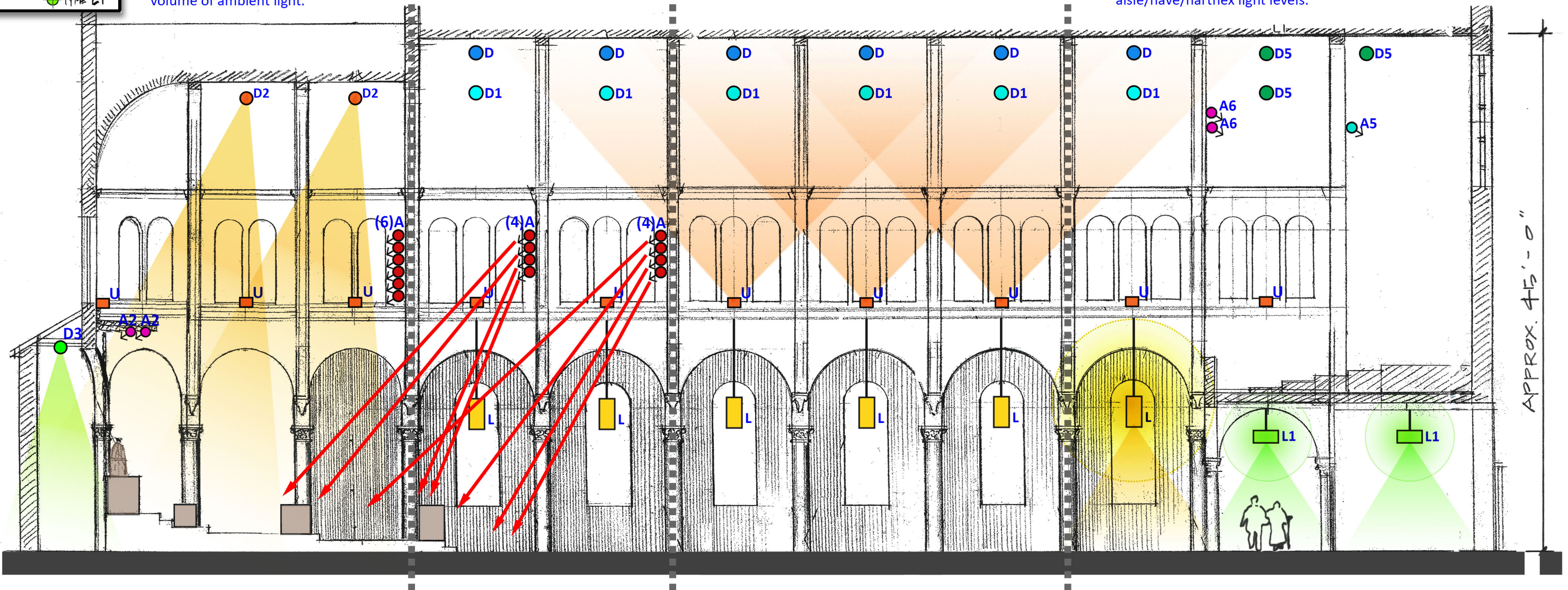
**ACCENT LIGHT**  
Surface mounted adjustable accents to control various targets in the sanctuary area.



**UPLIGHT**  
Surface mounted adjustable uplights provide a vault filling volume of light to lighten and reveal the soaring majesty of the architecture.



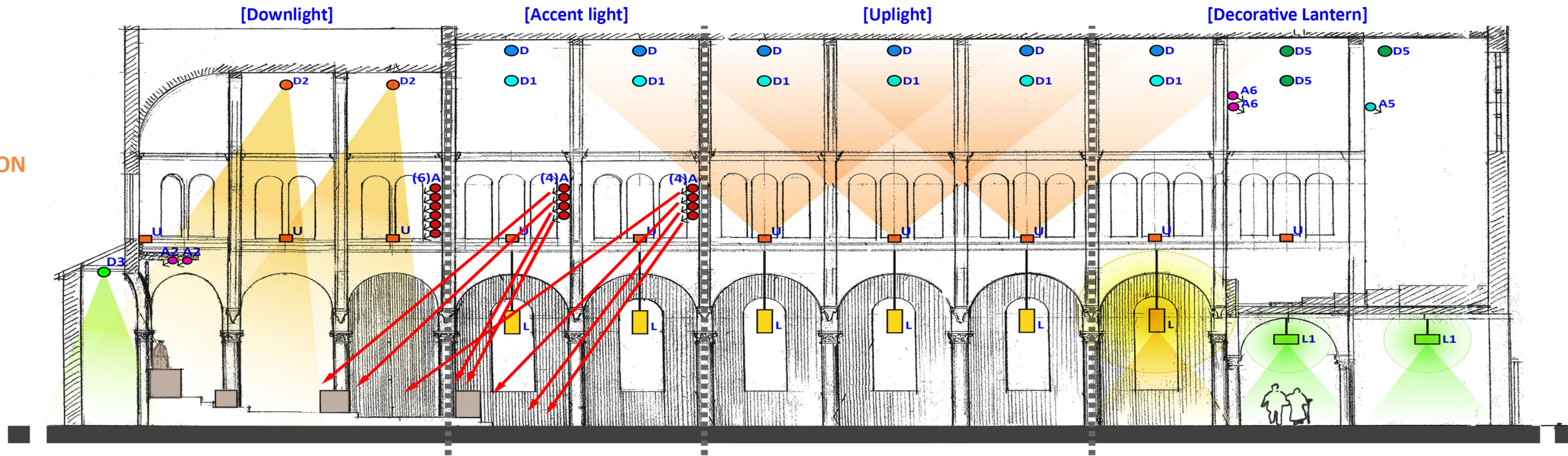
**DECORATIVE LIGHT**  
Existing lanterns to be restored and updated with new lamping and adding a downlight component (glow light + downlight) to contribute to the aisle/nave/narthex light levels.



**LONG SECTION @ Sanctuary, Nave, Narthex/Choir loft**  
SCALE 3/32"=1'-0"

# PRESET / CONTROL SUMMARY

## ■ LIGHT DISTRIBUTION SECTION



## ■ DIMMING CONTROL SCHEDULE

Pre- and Post Liturgy	Downlight							Uplight						Accent														Lantern															
channels	1	2	3	4	5	6	7	8	9	10	11	12	13	14	15	16	17	18	19	20	21	22	23	24	25	26	27	28	29	30	31	32	33	34	35	36	37	38	39	40	41	42	
light type	Downlight							Uplight						Accent														Lantern															
fixture type	D	D1	D2	D3	D4	D5	D5	U	U	U	U1	U1	U2	A	A	A	A	A	A	A	A	A	A	A1	A1	A1	A1	A2	A3	A	A	A	A	A4	A5	A6	glow	down	glow	down	glow	down	
Pre- and Post Liturgy	60	30	30	60	30	30	30	30	30	30	30	30	30	90	90	90	60	60	90	90	90	60	60	30	30	30	30	30	30	60	60	60	60	30	30	30	30	30	30	30	30	30	
Visiting hours	0	0	0	0	0	0	0	0	0	0	0	0	0	0	0	0	0	0	0	0	0	0	0	0	0	0	0	0	0	0	0	0	0	0	0	0	0	0	0	0	0	0	0
quantity per group	12	12	4	5	1	4	2	12	7	2	12	2	8	2	2	2	2	2	2	2	2	2	2	2	2	2	2	3	14	2	2	2	2	2	2	4	12	12	3	3	2	2	
location/target	Nave Center	Nave Side	Sanctuary	Apse Ambulatory	Font	Choir	Choir	Nave	Sanctuary Apse	Choir	Side Aisles - Near Sanctuary	Sanctuary Side Aisle	Apse Ambulatory	Reredos / High Altar I	Reredos / High Altar I	Reredos / High Altar I	Presider Chairs II	Presider Chairs III	Altar III	Altar III	Altar III	Cantor Stand V	Ambo VII	South Shrine VIII-a	South Shrine VIII-b	North Shrine IX-a	North Shrine IX-b	Baldacchino	Stations of the Cross	Sanctuary Front IV	Cantor Stand / Ambo V / VI	Top of Nave VII	Top of Nave VII	Font X	Rose Window XI	Pipe Organ XII	Nave	Nave	Under Balcony	Under Balcony	Narthex	Narthex	

## ■ DIMMING CIRCUITS

